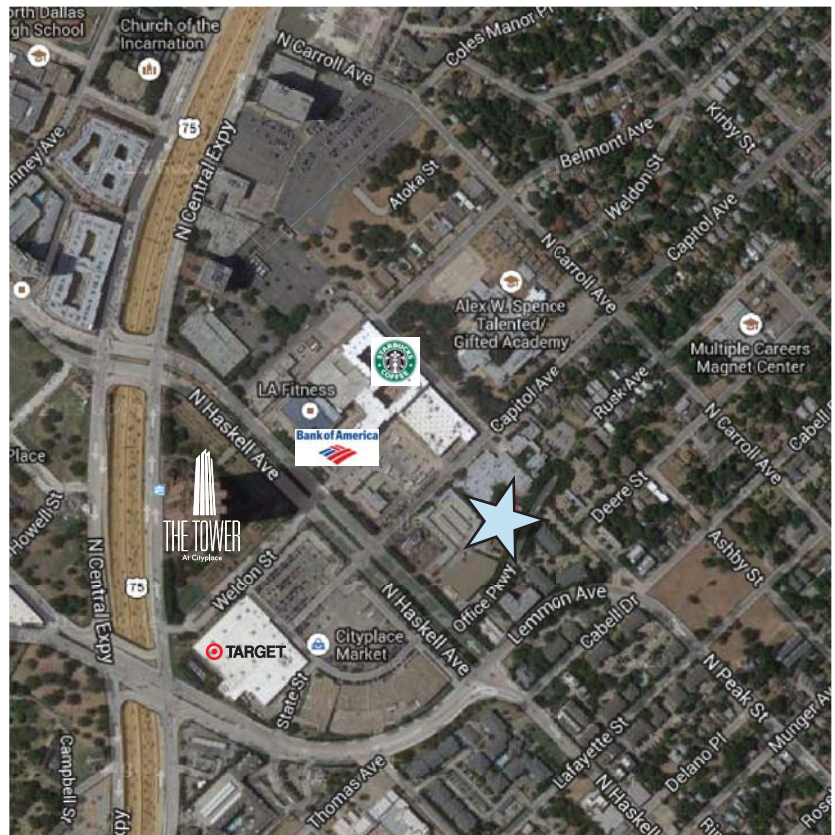


4141 Office Parkway



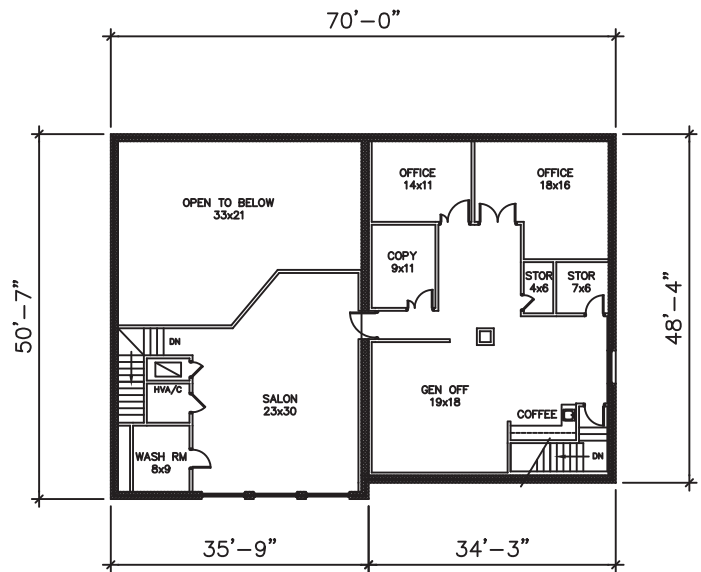
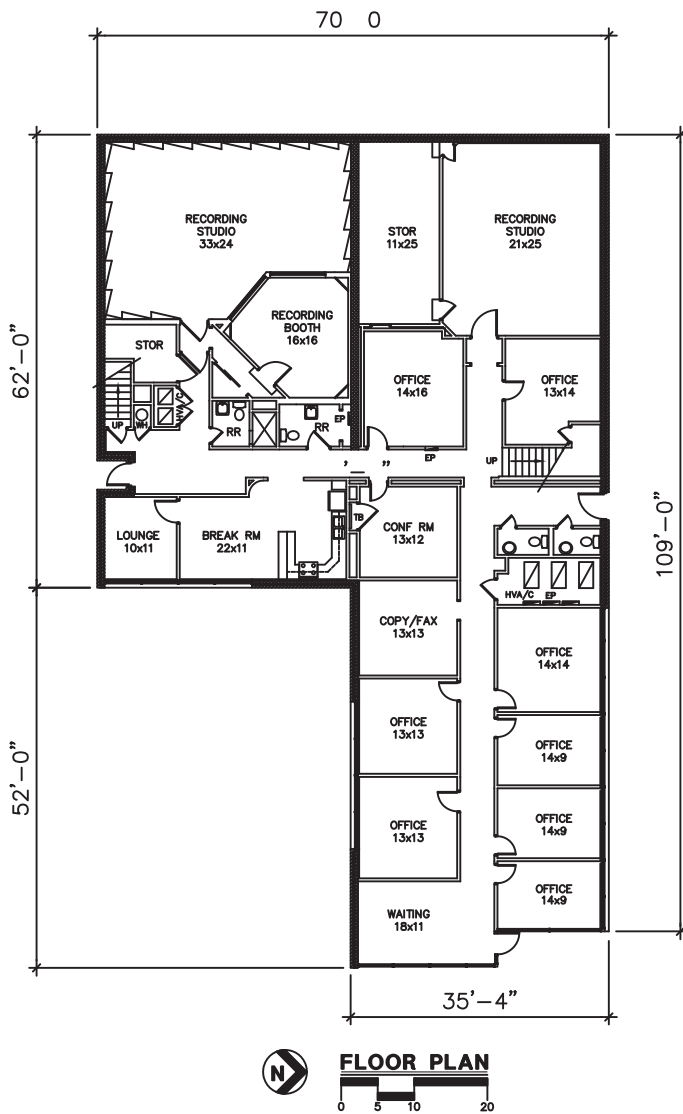
Property Features:

- 2-story office building
- 9,445 SF
- 7,000 SF floor plate
- \$1,499,999 Sales Price
- New roof 2013
- Newly remodeled interior
- Build out favors law offices or executive suites
- Building can be duplexed or leased to multiple parties
- Located adjacent to Trammell Crow's proposed "East Village" development
- Close proximity to Uptown and downtown Dallas
- PD Zoning
- 24 Car Parks



Hanes Chatham
214.267.0421
hchatham@streamrealty.com

4141 Office Parkway



**4141 OFFICE PARKWAY
DALLAS, TX**

BUILDING SUMMARY

OFFICE	7,000 SF
MEZZANINE OFFICE	2,445 SF
TOTAL	9,445 SF



Hanes Chatham
214.267.0421
hchatham@streamrealty.com